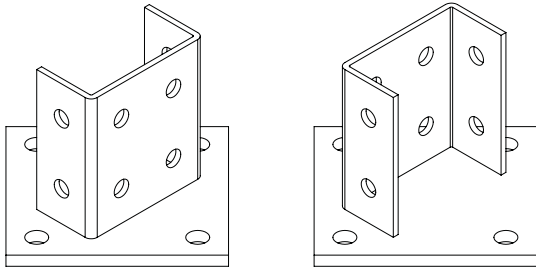


UNE-EN 61537
REV.23/05/2018



PROFILE HEAD MULTIAxis K82 ME



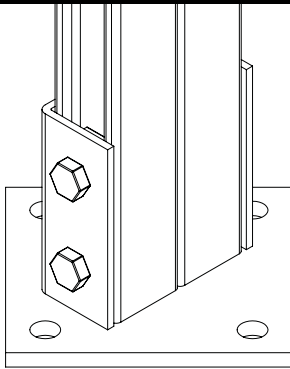
Finishes: HDG, ss304, ss316.

Characteristics:

- Metallic
- Non-flame propagating component
- Electrically conductive component
- With metallic coating, resistance to corrosion:

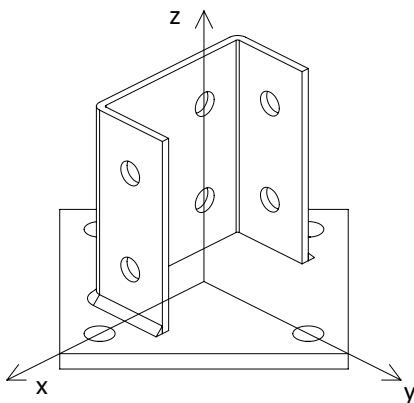
HDG: class 6 ss304: class 9C ss316: class 9D

ASSEMBLING INSTRUCTIONS



- Profile head multiaxis K82ME is used to fix 82x41 double strut profiles to wall, floor or ceiling when the profile 41x82 is subject to actions in both working axis.
- To fix K82ME to wall / ceiling / floor, 4 anchors SCM 12x85 are needed.
- To fix 82x41 double strut profile to K82, 4 spring nuts M10 and 4 bolts M10x30 DIN 933 (or 4 bolts M8x30 DIN 933 + 4 washers M8 DIN 9021) are needed.
- K82ME is usually used with products of BASORPERFIL 41/82 family to make up rack supports, special tunnel supports, or even solar energy structures.

SAFE WORKING LOAD



ADMISSIBLE EFFORTS					
K82ME	Mx	My	Fx	Fy	Fz
	kg.m	kg.m	kg	kg	kg
	+46	200	1900	1560	2000
-50					

Declared values include 1.7 safety factor as requested in EN IEC 61537 for cable tray supports.

In order to verify the validity of the product with combined efforts maintaining the security factor of 1.7 defined according to UNE-EN IEC 61537 product standard, a simplified application of Navier's Law can be made by calculating the % of work in each effort and checking that the sum is less than 100%.

$$\frac{Fz \text{ project}}{Fz \text{ admissible}} + \frac{Mx \text{ project}}{Mx \text{ admissible}} + \frac{My \text{ project}}{My \text{ admissible}} \leq 1$$

Related products:

BASORPERFIL 41/82 profiles and accessories.